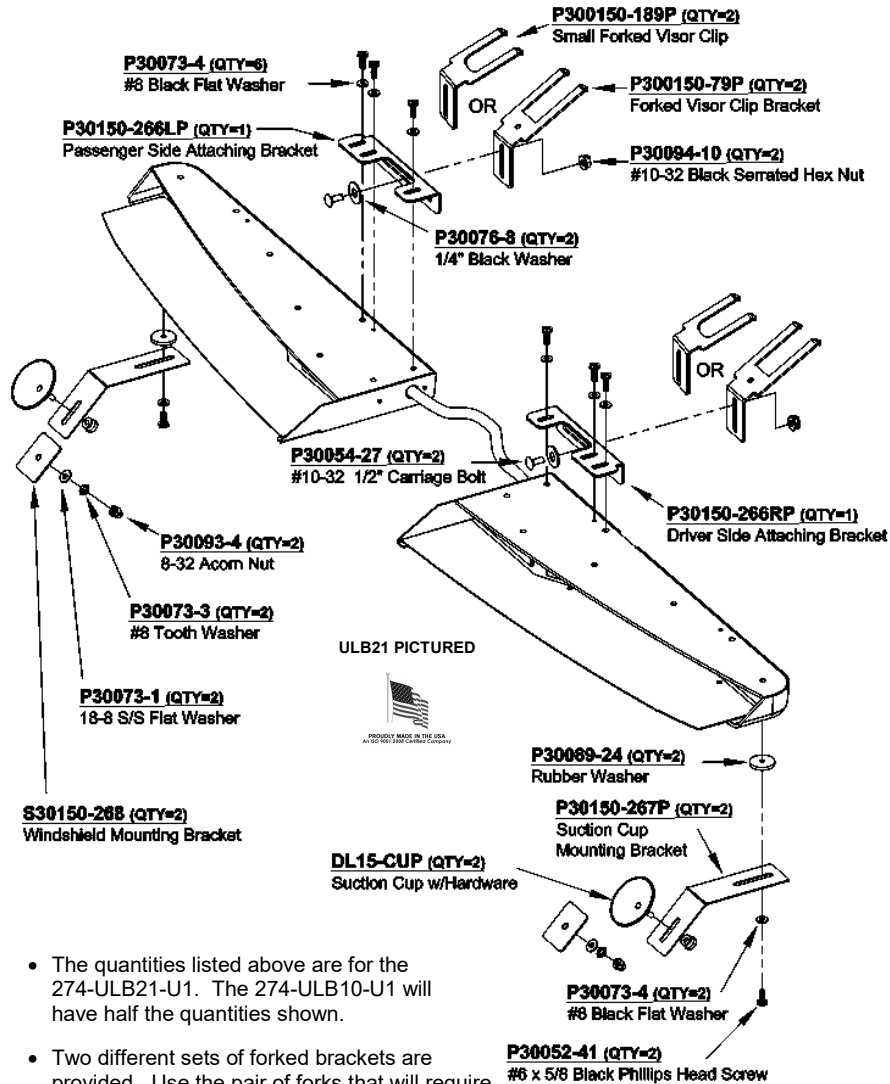


274-ULB10-U1 and 274-ULB21-U1

Universal Mounting Kit for the Half and Split Phantom

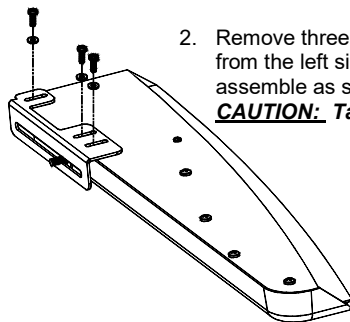
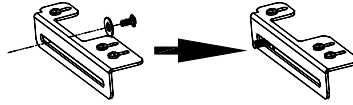


- The quantities listed above are for the 274-ULB21-U1. The 274-ULB10-U1 will have half the quantities shown.
- Two different sets of forked brackets are provided. Use the pair of forks that will require the least amount of adjusting when aligning the light with the window.
- You **MUST** use a pair of forked brackets, **in conjunction with** the suction cups or the window adhesive mounting pads.
- Determine if you can install the Forked Brackets using your visor clips or if you will be installing them without the use of visor clips.

Forked Bracket Installation With Visor Clip

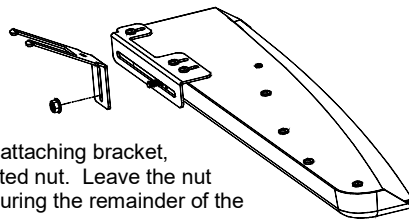
1. Insert one of the carriage bolts through one of the washers. *Please note that washer is used as a spacer on the square neck of the carriage bolt.* Slide the bolt and washer through the back of the right bracket.

For the 274-ULB21-U1, be sure to select the correct bracket. The flange with a single slot should be located towards the center of the light.



2. Remove three of the #8 x 1/2" self-tapping Phillips pan head screws from the left side of the light. Using the #8 washers enclosed and assemble as shown to the left.

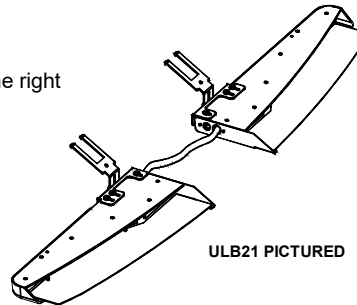
CAUTION: Take extreme caution not to over tighten the screws!!!



3. Install one of the forked "L" brackets onto the attaching bracket, using the carriage bolt, a washer, and a serrated nut. Leave the nut slightly loose to allow for minor adjustments during the remainder of the installation.

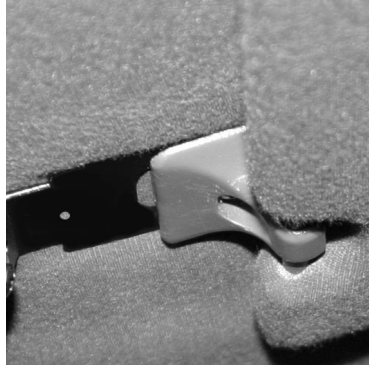
CAUTION: Take extreme caution not to over tighten the screws!!!
Over tightening of the screws can strip the holes.

4. For the 274-ULB21-U1, repeat steps 1-3 for the right attaching bracket.



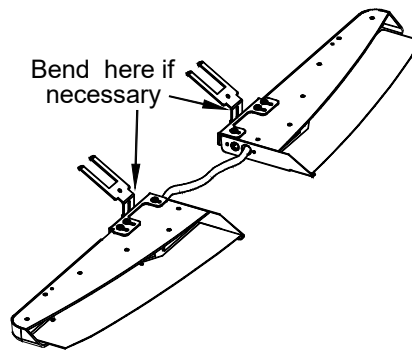
5. Locate the two visor clips on the vehicle. The style may vary from vehicle to vehicle. Some styles use only one screw each, while others may have more. Verify that both visor clips are a minimum of 3" from the center of the window, and a maximum of 8" from the center.





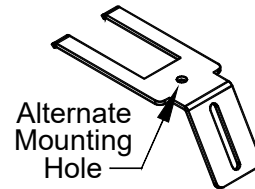
- Loosen (or remove if necessary) both visor clips for the 274-ULB21-U1 or the passenger side visor clip for the 274-ULB10-U1. They should be loose enough that one of the forked brackets can easily slide under each clip, then tighten the clip such that it securely holds each bracket in place.

- Check to see that the bottom of the light is level front-to-back. If it is not level, remove the light from the visor clips and carefully bend the forked brackets as necessary. Reinstall the light and check again for levelness. Repeat this process until the light is level.



Forked Bracket Installation Without Visor Clips

Some vehicles may not have visor clips appropriate for the previously described installation, or your application may completely lack any visor clips. An alternate mounting screw hole is provided in the bracket for these situations. This hole can be used with an appropriate user supplied screw or other suitable fastener.

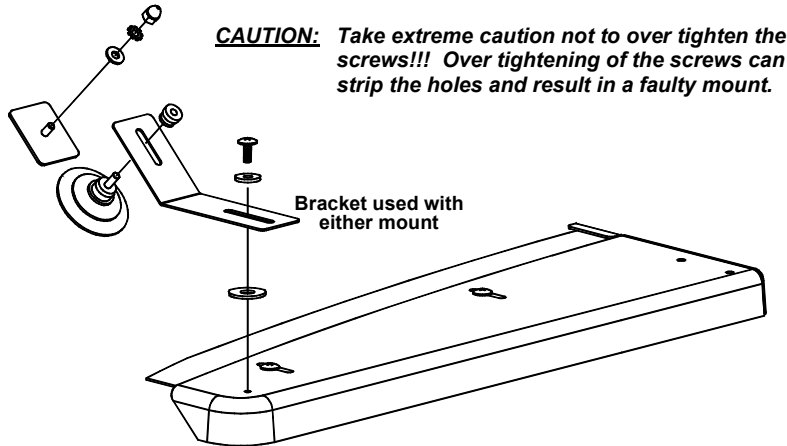


- Locate the roof brace under the headliner of the vehicle or other suitable mounting surface.
- Pick an area to mount the brackets (one on each side) that is a minimum of 3" from the center of your window and a maximum of 8".
- Determine an appropriate size screw that it is capable of supporting the weight of the light and will penetrate the mounting surface securely mounting the brackets.
- Carefully drill any necessary pilot holes in your roof brace. **CAUTION: Take care that you do not penetrate the roof of the vehicle.**
- Install the screws through each bracket.
- Check to see that the bottom of the light is level front-to-back. If it is not level, remove the light from the visor clips and carefully bend the forked brackets as necessary. Reinstall the light and check again for levelness. Repeat this process until the light is level.

Suction Cups or Window Adhesive Mounting (MANDATORY)

You **MUST** use either the suction cups or the window adhesive mounts in addition to the forked brackets.

1. Use the #6-5/8" black screw to attach the angled bracket to the holes in the end of the light, as pictured below. Use the rubber washer between the bracket and the light housing. Repeat for the other half if installing the 274-ULB21-U1.



2. Use the appropriate hardware (as shown above and on page 1) to attach either the Adhesive Pads or the Suction Cups, depending upon your application.



If using the window adhesive, carefully follow the directions on the packaging.



The manufacturer assumes no responsibility for the secure mounting of this light. It is the responsibility of the installer and/or owner to ensure the lightbar is mounted securely. Check your light every time you enter the vehicle to ensure that it is mounted securely.

These mounting instructions describe the standard, most common way to mount this light. This method may or may not apply to your vehicle. Because vehicles can vary widely in their design, it may be necessary to configure the brackets differently than described. Some applications may require you to design your own custom brackets. The installer assumes all responsibility for the integrity of the installation.